

CURATED



HARDWARE
INDEX

S.S HANDLE
collection



AH-SS-031

CANDY CUT

FINISH	96MM	128MM	160mm	192mm	224mm	288mm
C.P/Z.B/S.N	120	144	-	196	225	252
R.G/G.D/C.B	140	168	-	228	260	292
pcs. (in box)	30	25	20	20	20	20



AH-SS-032

TELEPHONE

FINISH	96MM	128MM	160mm	192mm	224mm	288mm
C.P/Z.B/S.N	130	150	-	178	212	236
R.G/G.D/C.B	150	174	-	206	236	276
pcs. (in box)	30	25	20	20	20	20



AH-SS-033

RADO CUT

FINISH	96MM	128MM	160mm	192mm	224mm	288mm
C.P/Z.B/S.N	120	144	-	192	216	242
R.G/G.D/C.B	139	168	-	222	250	278
pcs. (in box)	30	25	20	20	20	20



AH-SS-034

DIAMOND

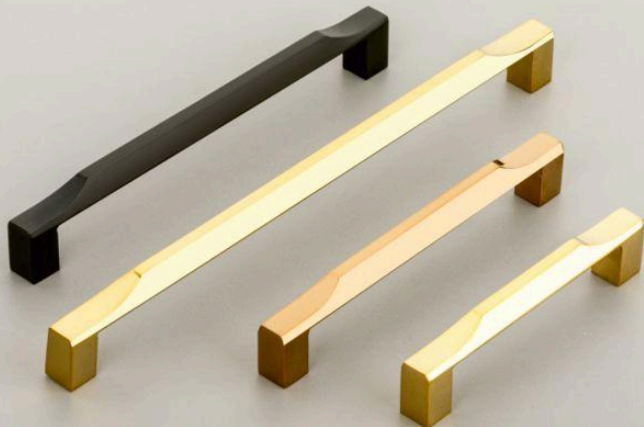
FINISH	96MM	128MM	160mm	192mm	224mm	288mm
C.P/Z.B/S.N	140	160	-	192	224	248
R.G/G.D/C.B	162	185	-	222	260	290
pcs. (in box)	30	25	20	20	20	20



AH-SS-035

CANDY
C

FINISH	96MM	128MM	160mm	192mm	224mm	288mm
C.P/Z.B/S.N	120	144	-	192	216	242
R.G/G.D/C.B	140	168	-	222	250	278
pcs. (in box)	30	25	20	20	20	20



AH-SS-036

ZUPDI
CUT

FINISH	96MM	128MM	160mm	192mm	224mm	288mm
C.P/Z.B/S.N	120	144	-	196	216	242
R.G/G.D/C.B	140	168	-	222	250	278
pcs. (in box)	30	25	20	20	20	20



AH-SS-037

MINI RADO

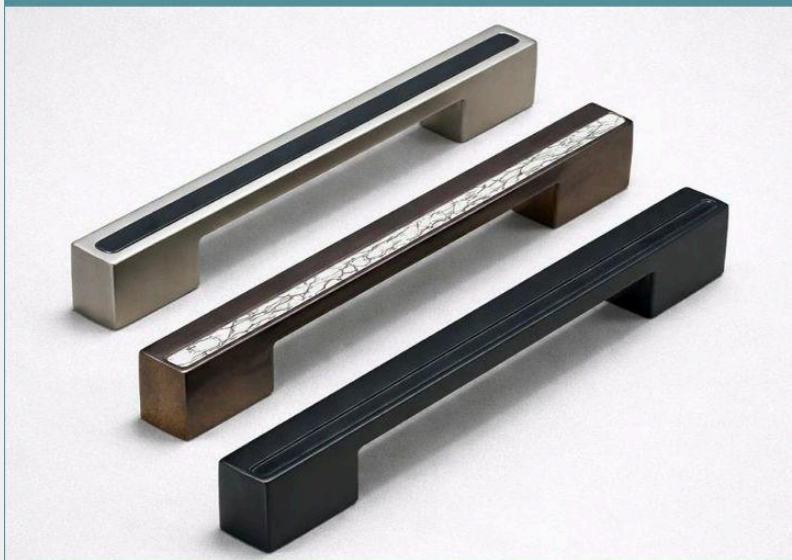
FINISH	96MM	128MM	160mm	192mm	224mm	288mm
C.P/Z.B/S.N	104	144	-	180	212	232
R.G/G.D/C.B	120	168	-	208	245	273
pcs. (in box)	30	25	20	20	20	20



AH-SS-038

ROUND SQUARE

FINISH	96MM	128MM	160mm	192mm	224mm	288mm
C.P/Z.B/S.N	120	144	-	192	216	242
R.G/G.D/C.B	139	168	-	222	250	278
pcs. (in box)	30	25	20	20	20	20



AH-SS-039

CABRIO

FINISH	96MM	128MM	160mm	192mm	224mm	288mm
C.P/Z.B/S.N	220	-	320	-	392	-
R.G/G.D/C.B	255	-	371	-	454	-
pcs. (in box)	30	25	20	20	20	20



AH-SS-042

SQUARE PATTI

FINISH	96MM	128MM	160mm	192mm	224mm	288mm
C.P/Z.B/S.N	150	174	-	222	246	270
R.G/G.D/C.B	174	200	-	257	285	313
pcs. (in box)	30	25	20	20	20	20



AH-SS-049

CANDY

FINISH	96MM	128MM	160mm	192mm	224mm	288mm
C.P/Z.B/S.N	110	134	-	182	206	230
R.G/G.D/C.B	127	155	-	212	238	266
pcs. (in box)	30	25	20	20	20	20



AH-SS-051

CANDY-
ZUPDI

FINISH	96MM	128MM	160mm	192mm	224mm	288mm
C.P/Z.B/S.N	110	134	-	182	206	230
R.G/G.D/C.B	127	155	-	212	238	266
pcs. (in box)	30	25	20	20	20	20



AH-SS-052

ROUND C

FINISH	96MM	128MM	160mm	192mm	224mm	288mm
C.P/Z.B/S.N	88	132	-	176	220	264
R.G/G.D/C.B	104	156	-	208	260	312
pcs. (in box)	30	25	20	20	20	20



AH-SS-053

SQUARE PATTO

FINISH	96MM	128MM	160mm	192mm	224mm	288mm
C.P/Z.B/S.N	110	134	-	182	206	230
R.G/G.D/C.B	127	155	-	212	238	266
pcs. (in box)	30	25	20	20	20	20



AH-SS-057

JP

FINISH	96MM	128MM	160mm	192mm	224mm	288mm
C.P/Z.B/S.N	120	144	-	192	216	242
R.G/G.D/C.B	140	168	-	222	250	278
pcs. (in box)	30	25	20	20	20	20



AH-SS-058

ZUPDI

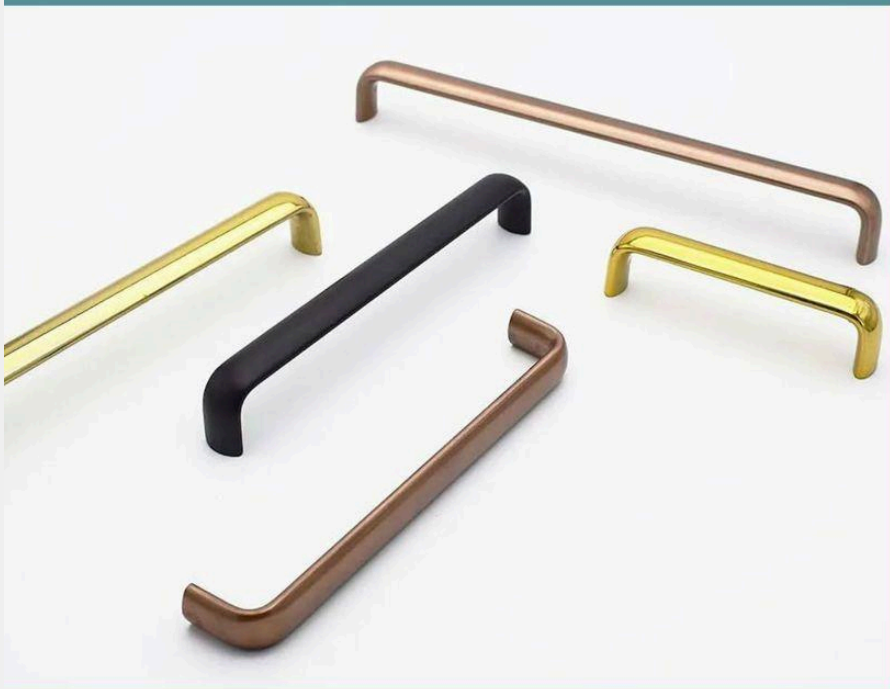
FINISH	96MM	128MM	160mm	192mm	224mm	288mm
C.P/Z.B/S.N	120	144	-	192	216	242
R.G/G.D/C.B	140	168	-	222	250	278
pcs. (in box)	30	25	20	20	20	20



AH-SS-059

DIAMOND CUT

FINISH	96MM	128MM	160mm	192mm	224mm	288mm
C.P/Z.B/S.N	-	-	-	-	-	-
R.G/G.D/C.B	136	160	-	208	232	278
pcs. (in box)	30	25	20	20	20	20



AH-SS-060

OVEL-D

FINISH	96MM	128MM	160mm	192mm	224mm	288mm
C.P/Z.B/S.N	36	54	-	72	90	-
R.G/G.D/C.B	-	-	-	-	-	-
pcs. (in box)	30	25	20	20	20	20

From Every
Crack
Emerges
Luxury

Stainless Steel
Collection



AADHAYA®
LOCKS AND FITTINGS

PRECISION • DESIGN • DURABILITY

📍 Patel Nagar • Rajkot • Gujarat

☎ Phone: +91 99132 35199

✉ aadhayahardware@gmail.com

🌐 www.aadhayahardware.com

RAJKOT • INDIA